



Shirland Road, W9 2JD
£2,300 Per Month





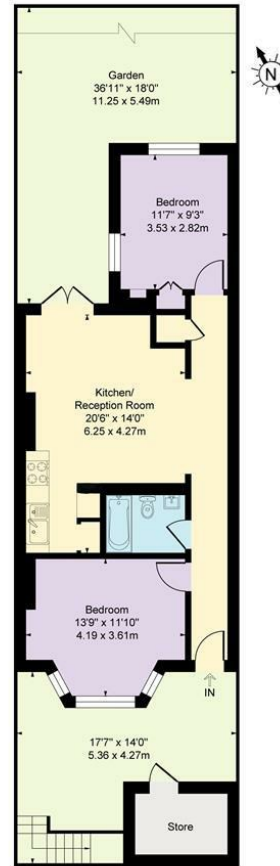
2 x  **1 x**  **1 x** 

A newly refurbished two bedroom lower ground garden flat with high ceilings, few mins walk from the canal and Warwick station situated on Shirland Road in a Victorian conversion. This property benefits from the new wooden floor, new kitchen, new bathroom and spacious living room with access to a private garden. Its own entrance and is decorated to a high standard. Comprises two double bedrooms with high ceilings and plenty of natural light.

Viewings are highly recommended.



Shirland Road, London, W9
Approximate Gross Internal Area
669 sq ft - 62 sq m



Lower Ground Floor

Illustration for identification purposes only, not in scale

Important Notice Debussy Property Service Ltd trading as Braithwait for themselves and for the vendor of this property whose agents they are, give notice that (i) these particulars do not constitute any part of an offer or contract, (ii) all statements contained within these particulars are made without responsibility on the part of Braithwait or the vendor, (iii) whilst none in good faith, none of the statements contained within these particulars are to be relied upon as a statement of representation or fact, (iv) any intending purchaser must satisfy him/herself by inspection or otherwise as to the correctness of each of the statements contained within these particulars, (v) the vendor does not make or give either Braithwait or any person within their employment any authority to make or give any representation or warranty whatsoever in relation to this property. Wide angled lenses may be used in photographs.

Call us on 0207 289 8889 or email sales@braithwait.co.uk

B
BRAITHWAIT